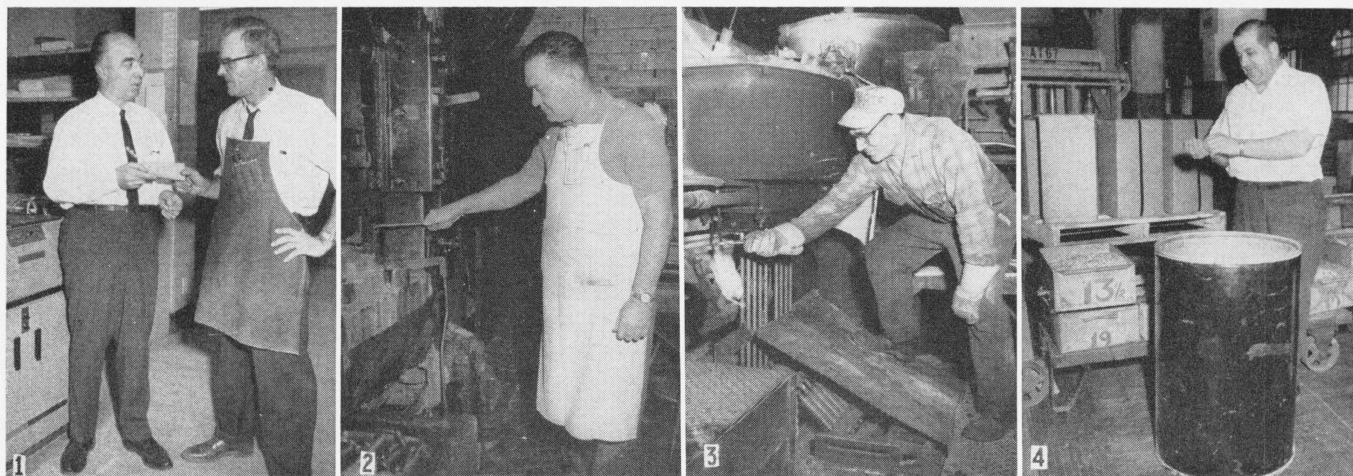


SCOVILL BULLETIN

MARCH, 1966

Published by Scovill Manufacturing Company for its Employees



\$1300 Paid Out For Suggestions In February

(1) \$344. was awarded to Edward Fredericks (right) of Addressograph. His suggestion concerning the typing of masters where large numbers of copies must be made resulted in savings of time and material. Supervisor George Kritzman made the presentation.

(2) Joseph White, Blank and Draw Tool Room, was awarded \$450. for his suggestion of positioning the strip material for cartridge cups so that the material is guided in the proper manner into the tools, thus saving time and cutting tool maintenance due to tool smashups.

(3) A partial award of \$120 was presented to Michael Scurso, of Casting. He devised a method whereby gasses are burned or blown out of the tools and dies on the continuous rod machine, thereby saving wear and tear on the dies.

(4) \$281. was presented to Nicholas Perrotti, of Closure Packing, as partial payment for his idea that materials coming into the plant be packed in barrels rather than cardboard boxes. In addition to savings on cost of cartons, materials are better protected and are sure to arrive undamaged.

\$60.00 Award — Mearill Stapleton, Wire Mill

\$30.00 Award—Louis Sandulli, Hot Forge; Alec Boyarchok, Lacquer Room

Letter of Appreciation

Benjamin Bannick, Coupling; Carle-

ton Miles, Hot Forge; Warren Baker, Cosmetic Division; Frank Stanton, Electrical; Frank Loffredo, Rod Mill Tool Crib; Walter Cronan and Nicholas Coviello, Rod Mill; Edward Crelan and John Pescetelli, Casting Shop.

Supplements To Medicare

Connecticut Blue Cross has announced a new plan — *Blue Cross 65* — for those over 65 years of age, to cover health care services not paid by Medicare. A summary of these benefits will be found on Page 5.

Those now covered by Blue Cross on a direct payment basis will pay \$4.50 per month, payable quarterly.

Persons 65 years of age or over are urged to sign for Medicare Part B before March 31st as *Blue Cross 65*, and C.M.S. 65, and insured plans can only supplement Medicare, they cannot duplicate it. Present plans of medical insurance will not be available for those eligible for Medicare.

C.M.S. has not yet announced its plans. Other insured plans are available and will be considered. The Com-

(Continued on Page 5, Col. 1)

Explorer Post Planned At Scovill

Another youth organization is being sponsored by Scovill to help high school students become familiar with the job opportunities offered by industry to high school and college graduates.

A selected group of high school sophomores and juniors attended an orientation meeting in the SERA Building where they were welcomed by President Baldrige who encouraged the students to join the Explorer Vocation Post at Scovill.

Management representatives told the students what such an organization could offer them — discussions with department heads in many

phases of the business, field trips into the plant and offices to see first hand actual production and administrative functions. Local and state representatives of the Explorer Vocational Post organization outlined the planning of such a Post.

John Shull, Mills Div., who is to be advisor to the group, conducted the meeting; Arthur Schuyler, Gen. Mfg. Div., displayed various items produced by the General Manufacturing Division. Other members of the committee in charge of the program include: Chairman Vernon Russell, of the Closure Div., and Tom Kaukas, of Waterbury Services.

MEMO *from Management:*

Annual Report — 1965

Steady Improvement

Scovill is now mailing out its Annual Report for 1965. It's an encouraging one—with profits up 65% over 1964 and sales 37% higher. It wasn't just good business throughout the country that has been responsible for this steady improvement. New plants have been built, new equipment has been installed, and new products have been added. But, above all, new thinking and new ideas have made us more aware of the necessity for turning out products that will attract customers and earn a profit.

But how good were our 1965 results? Our profit of \$8,854,778 was 3.5% of sales. This is on the low side compared with what some other large manufacturing companies are doing. Here are some examples:

	<i>Profits as % of 1965 Sales</i>
Anaconda	8.8%
Aluminum Co. of America	6.5%
Sunbeam	6.8%
Talon	7.9%
United-Carr	6.1%
Caterpillar	11.2%
Dupont	13.6%
Monsanto Chemical	8.3%
Scott Paper Co.	10.3%
Union Carbide	11.0%
SCOVILL	3.5%

The first five companies shown above each produce products that compete with Scovill products. Anaconda produces brass, Alcoa produces aluminum, Sunbeam produces small appliances, Talon produces zippers, and United-Carr produces snap fasteners. The other five shown are examples of the profit performance of companies well known to the general public. Naturally, all manufacturers do not do as well as these five but the national average for profits is between 5% and 6% of sales.

Scovill is operating in the big leagues of American industry — we are one of the 500 largest industrial companies in the country! Our products are well diversified and occupy important positions in their respective markets. We have a fine group of employees, well qualified to handle their particular responsibilities.

With all of these factors working for us, we are confident that we can do better than a profit of 3½% of sales—that we can continue to improve our sales and profit position in the years ahead. We are not willing to settle for just an average profit of 5% to 6%. Doing better than average is the best form of security we know of — for employees, for stockholders, and for the communities in which we operate.

Credit Unions

Credit Union #1

Dividend declared—4.8%
 President—Fred Kirschbaum
 Vice Pres.—Carl Pickett
 Treasurer—George Garrity
 Asst. Treas.—Bernadine Milburn
 Secretary—James Moore
 Board of Directors—The officers,
 Frank Martin, John McAree, John
 Mitchell, James Moore, Harold Rogers
 Credit Committee—Joseph Donahue,
 Michael Buczak, Joseph Sullivan
 Supervisory Committee — Thomas
 Rush, Ray Ladden, Ned Wolff

Credit Union #2

Dividend declared—4%
 President—Peter Moneta
 Vice Pres.—Vincent Iacovino
 Secy-Treas.—James Ryan
 Board of Directors — The officers,
 Carl Longo, Patrick Fitzpatrick, John
 McGovern, James Smith
 Credit Committee—Carl Longo, Vin-
 cent Iacovino, Joseph Favale
 Supervisory Committee — James
 Smith, Matthew Kobylinski, Robert
 Shove

Credit Union #3

Dividend declared—4.5%
 President—Arthur Tracy
 Vice Pres.—Edward Mitchell
 Treasurer—Oliver LaBelle
 Asst. Treas. & Secy.—George Rein
 Board of Directors—The officers,
 William Zenick
 Credit Committee — John Rondi-
 naro, Charles Vaughn, Oliver LaBelle
 Supervisory Committee — Honorius
 Chabot, Rocco Rinaldi, Arthur Tracy

Credit Union #4

Dividend declared—4.5%
 President—Henry Carisio
 Vice Pres.—Edward Willhaus
 Treasurer—John Carey
 Asst. Treas.—Thomas O'Dea
 Secretary—Mary Clark
 Board of Directors — The officers,
 Harold Stieler, Robert Weber
 Credit Committee—Fred Angelone,
 Robert Weber, John Capone, James
 Burkle, Henry Carisio
 Supervisory Committee — Henry
 Perriault, William Mancini, William
 Armour



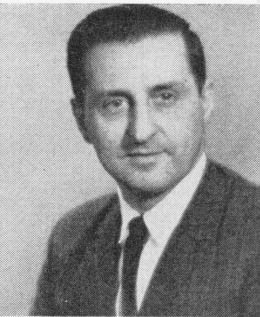
John T. Fogarty
Mill Oper. Mgr. Ofc.
40 yrs — Feb. 10



Leo Belliveau
Cosmetic Supt.
25 yrs — Feb. 11



Walter Brazzycki
Hot Forge
25 yrs — Feb. 20



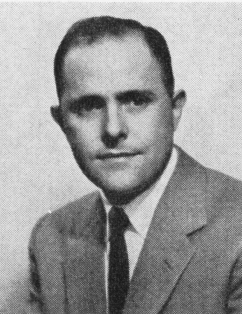
Jerry DiPietro
West Machine
25 yrs — Feb. 25



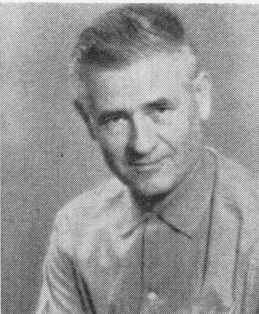
Anthony Palladino
New Milford
25 yrs — Feb. 5



Dominic Polo
Rod Mill
25 yrs — Feb. 7



Ned Privitera
Closure—New York
25 yrs — Feb. 24



Albert Schultz
Blanking Room
25 yrs—Feb. 12



Francis Shiel
West Machine
25 yrs — Feb. 2



Gaysi Stokes
Mfg. Eyelet
25 yrs — Feb. 28

New Assignments

Closure Div.

PASQUALE TARULLO — Asst. Foreman of Gripper Eyelet, Dept. 69, and Gripper Eyelet Tool Room, Dept. 370

Gen. Mfg. Div.

ANTHONY CUGNO — Asst. Factory Superintendent, West Plant

ARTHUR K. OLDIN, JR. — District Sales Manager, Louisville Office

Plant Engineering

ROBERT PRYOR — Asst. Foreman, Electrical Maintenance in the East Plant

Blood Donor Day Tuesday, March 15

The first visitation of the Blood Mobile Unit to Scovill for 1966 will be on Tuesday, March 15th, at the SERA from 12:30 until 5:00 p.m.

Continuing the program established other years, employees scheduled to contribute a pint of blood at this time are those in Section #1—the Closure, Cosmetic and Maintenance

Webster O'Neill, Gen. Mfg. Acct.
40 yrs — Feb. 23, 1966
Winston Elliott, Clos. Tl. & Mach.
25 years—Feb. 8, 1966

Retirements

Effective March 1, 1966

CORNELIUS CAVANAUGH, guard in Plant Protection — almost 25 years.

EDWARD DEBISSCHOP, electrician in the Electrical Dept.—43 years.

MARY LAWLOR, sales control clerk in Central Accounting—22 years.

GIUSEPPE MANCINI, trucker in Shipping and Receiving—42 years.

ENRICO MARCHIANI, floorman in Closure Packing—15 years.

nance divisions, including offices.

Of course, all other eligible employees are also invited to participate. If pledge cards are not available in your department, call the Employee Activities Office, Ext. 834; or, if you find on Tuesday that you can make it — just drop in, you'll be welcome.

Service Anniversaries

Theodore Balunas, Strip Mill
25 years — Feb. 10, 1966

Carl Hettlinger, Cosmetic Tool
25 years — Feb. 12, 1966

Anthony DiMaria, General Stores
25 years — Feb. 13, 1966

Susan Latozas, Chucking
25 years — Feb. 16, 1966

Peter Bucari, Bldg. 112 Cleaning
25 years — Feb. 22, 1966

Mary St. Pierre, Gen. Mfg. Packing
25 years — Feb. 24, 1966

Leonard McIlroy, Tinsmiths
10 years — Feb. 8, 1966

Frank Rodgers, Jr., Strip Mill
10 years — Feb. 10, 1966

Arthur Schuyler, Gen. Mfg. Sales
10 years — Feb. 13, 1966

Richard Dixon, Mills-Milwaukee
10 years—Feb. 13, 1966

Kenneth French, Chucking
10 years — Feb. 22, 1966

Frieda Rubin, Mill Accounting
10 years — Feb. 23, 1966

Armando Gugliotti, New Milford
10 years — Feb. 24, 1966

Leslie Maglathlin, Closure-Jackson
10 years — Feb. 27, 1966

Joseph Connelly, Casting Shop
10 years — Feb. 28, 1966



Servicator Draws Interest At Auto Dealers Convention

Servicator Sales Manager Ken Jaffe (right) answers questions of one of the many interested attendants at the annual National Automobile Dealers Association Convention held in Miami Beach, Florida, recently.

Servicator, a product of our General Manufacturing Division, is the world's first car maintenance computer.

A small compact instrument which mounts under the dashboard of the car and is connected to the ignition system, *Servicator* records the actual use a car is given and, at predetermined intervals, depending on individual use of the car, automatically ejects a card which indicates that service is due. Printed on the card are all the things that should be done to the car at that time.



Servicator is designed to save a motorist money while assisting, also, to better maintain the car. At present, it is sold to car dealers only who are installing them in new cars.

Rod & Gun Club

By Walter Dziura

Our regular monthly meeting was held on Tuesday, February 15th. *Robert Fumire* reported that fishing during the ice fishing contest at Woodtick was poor. The fish were not active probably because they were spawning. The contest was won by *Robert Fumire* with an 87/8" perch.

Work is progressing very nicely on the rifle range in the old Pattern Shop. An outside stairway is being constructed and the finishing touches are being completed. By presstime the range will have been cleaned, and painting will be progressing.

Our annual cabaret dance was a great success and everyone enjoyed themselves very much. The SERA kitchen staff catered and Lou Masters' band played for everyone's dancing enjoyment. Now's the time to make plans with your group to attend the next dance.

The schedule of events for the coming year is planned as follows:

April 14—Spring Banquet

April 30, May 1—Fishing Contest for Members only

June 25—Children's Fishing Contest

Aug. 20, 3 to 8 p.m.—Outing

Reeves' Fishing Contest—Sept. 10-11, Sept. 24-25, Oct. 8-9, Oct. 22-23.

Our next regular meeting will be held on March 22nd at SERA at 7:30 p.m. All members are welcome—come and bring a fellow member.



RETIREMENTS RECORD 73 YEARS OF SERVICE

Jennie DiNuova receives congratulations and thanks of Cosmetic Division Superintendent Leo Belliveau for her over 42 years of faithful service as she retired. Co-worker Mary Perugini seconds the sentiments.



Teresa Daunis had built up a fine record of more than 31 years of service when she retired on February 1st. Foreman Harold Slocum extends the well wishes of all her co-workers and friends in Press 2.

Supplements To Medicare

(Continued from Page 1, Col. 1)

pany is investigating all possibilities in an effort to give those over 65 the best possible health coverage in line with present costs. You will be kept informed.

There are certain gaps which Medicare does not cover; here's how *Blue Cross 65* will fill them. *Blue Cross* coverage is listed in italics.

BENEFITS YOU GET IN A HOSPITAL

Medicare does not pay the first \$40 of your hospital stay.

Blue Cross 65 will pay this \$40.

Medicare provides a benefit period of 90 days, but from the 61st to 90th day you must share the cost by paying \$10 per day toward the cost of a semi-private room.

Blue Cross 65 will pay this \$10 charge from the 61st thru 90th day.

Medicare benefits in a hospital end after the 90th day.

Blue Cross 65 gives you 30 extra days of benefits and pays full charges for semi-private room and all hospital Special Services such as X-ray, drugs, operating room, anesthesia, laboratory services, oxygen and many more. Thus the combination of Medicare and Blue Cross 65 gives you full semi-private coverage for a 120-day hospital stay.

BENEFITS ANYWHERE IN THE WORLD

Medicare, with rare exceptions, will not pay for services outside the U.S.

Blue Cross 65 will cover the full cost of your hospital semi-private room and all hospital Special Services for a 30-day benefit period anywhere in the world.

CARE IN AN APPROVED NURSING HOME

Beginning January 1, 1967, Medicare will cover in full the first 20 days of care in a chronic or convalescent home or hospital extended care unit, but for the next 80 days in such a facility you must pay \$5 per day.

Blue Cross will pay this \$5 charge for you during the 80-day period.

NOTE:—Benefits as outlined above are for each spell of illness. There is no limit to the number of admissions during a calendar year, but re-admission to any hospital or chronic

or convalescent home or hospital extended care unit within 60 days following date of discharge is the same spell of illness.

OUTPATIENT AND EMERGENCY CARE

Medicare does not cover the first \$20 of charges for diagnostic services you receive in a hospital's outpatient department.

Blue Cross 65 will pay this \$20.

After the initial \$20 deductible charge, you pay 20% of charges for diagnostic services you receive on an outpatient basis for a period of 20 days.

Blue Cross 65 will pay the 20% not covered by Medicare.

Medicare does not cover treatment in the hospital emergency room.

Blue Cross 65 will pay the full charge for emergency room care for accidents and serious and sudden illness when you receive treatment within 72 hours.

Medicare does not cover hospital services incidental to outpatient surgery.

Blue Cross 65 will cover these services in full during the initial visit to the hospital.

In some instances, Medicare offers partial payment for services such as X-ray, radium, cobalt, physical and shock therapy provided in a hospital outpatient department.

Blue Cross will pay in full the portion of these services Medicare does not cover for you.

DRUGS

Medicare does not cover the cost of drugs or medicine outside a hospital.

Blue Cross 65 will pay for your prescription drugs for 120 days after discharge from a hospital as follows: You pay the first \$25 and Blue Cross will pay 80% of the balance up to a maximum of \$500.

REMINDER

Medicare Part A, supplemented by *Blue Cross 65*, will pay your hospital expenses. Medicare Part B will cover the medical-surgical services which are provided by your physician — but you must sign for Part B by March 31st. Call your local Social Security office immediately.

Anyone not eligible for Medicare (i.e.—husband is 67 years of age, wife



Steve McGuire

Already a familiar figure around the plant, Steve McGuire is assigned to the Employee Activities Office as Recreation Assistant. Presently, he's working with recreational groups in planning activities at the SERA Bldg.

In the summer, he'll take over supervision of activities at Woodtick, where he worked last summer while doing field work toward his master's degree in recreation which he received from Springfield College.

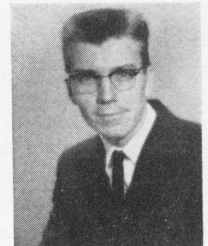
Annual Report

Our annual report is being mailed to all stockholders.

Employees who do not own stock but who may want a copy of the report can have one by contacting the Bulletin Office.

Training Course

MACHINIST. Ernest Lubinskas graduated as of February 7, 1966 and has been assigned to East Machine.



is 62 and not eligible for Medicare) will be continued on the present plan —either through Scovill Group or on a direct payment basis.

No forms or paperwork of any kind are necessary. For those covered thru Scovill, the change will be automatic; those on direct payment need only pay the Blue Cross membership charge which will appear on the next quarterly bill.

Help Bring Sight To The Sightless

It is a wonderful thing that each year more and more people are pledging their eyes to an Eye Bank so that, after death, their eyes can help someone regain his lost or impaired vision.

More and more requests are being made for information on this program. We're happy to tell its story.

What Is An Eye Bank?

An eye bank is an organization devoted to the securing of eyes from donors after death and using these eyes for corneal transplant operations or research.

The Eye Bank of Connecticut, established in the New Britain General Hospital, is a charter member of the Eye Bank Association of America, a nationwide organization of some 53 eye banks. It is sponsored by the Independent Order of Odd Fellows of Connecticut as part of their world-wide humanitarian program.

Thousands of state residents have filed their pledges in the Eye Bank office and have donated funds to help carry on this service. Many donor eyes have been received and made available to eye surgeons and research laboratories in Connecticut and even beyond our borders. Statistics have shown that there is a continued demand for over 42,000 eyes in the United States alone.

What Eyes Are Used?

Any eye from any person can be used; even those who have had cataract surgery or the wearers of glasses — the wearing of glasses does not affect the healthy cornea of the eye. Eyes not used for transplantation are invaluable for research.

Eyes cannot be designated for a specific person. They are used for the next patient on an eye surgeon's list. In the event a patient is not available in Connecticut (transplant must be done within 48 hours) the eyes are sent to another Eye Bank where they are needed.

How To Pledge Your Eyes

You must sign a pledge form and file it with the Eye Bank Office. Notify your next of kin of your desire. Also, inform your family physician and clergyman of your action (all major religious faiths approve this program). It should not be part of your will because eyes must be removed as soon as possible after



MAINTENANCE DIVISION'S SKILLFUL DRIVERS

"Skillful Driver Pins" were awarded recently to six men of our Waterbury Services by the Liberty Mutual Insurance Co. Mr. Albert T. Warner, section engineer of the insurance company's Loss Prevention Department, presented the pins. Plant Engineering Director T. W. Colina (4th, right) and Arthur Chaffee (extreme right) congratulated and thanked the men for their fine records.

Awards are presented annually to drivers of various cars and larger vehicles for their skill and safe practices in building up long-time records of no chargeable vehicle accidents.

Many maintenance and other service employees are called upon to drive vehicles of lesser size around the plant, inside of buildings and out. Their responsibility in driving these vehicles and guiding them safely around the plant is as great as

that of the men driving outside larger vehicles.

In view of statistics of a nationwide survey covering such drivers in industry showing their accident rate records, we are proud of the skill and safe practices shown by our drivers in setting records of no chargeable vehicle accidents. We are happy to join in the Insurance Company's program of showing recognition to these men by the awarding of special pins.

Pictured above, left to right, receiving the awards, are:—John G. Daniel, Welding Shop—10 years of safe driving; Frank Stanton, Electrical Dept.—6 years; Angelo Brunetti, West Machine—8 years; Fred Milano, Tin Shop—12 years; Henry Masi, Millwrights—1 year; and Carmen Errico, Pipe Shop—2 years. Joseph Squarzano, of the Foundry, was also presented an award for his 2-year record.

death, which would be before the will is read.

The Eye Bank must be notified immediately after death, day or night, by relatives or the physician. The Eye Bank then takes care of the necessary arrangements to receive and transport these eyes without delay. The Odd Fellows and Rebekah Volunteer Motor Corps transports the eyes in specially designed refrigerated containers.

Eye tissue can be neither bought nor sold. It is provided to patients and doctors free of charge. The only financial obligation of the patient is his surgeon's fees and hospital care.

Your gift of sight will cost you nothing but signifies a promise that you will one day participate in the miracle of sight restoration through the gifted hands of the eye surgeon.

Ronald Seidel of Closure Design has been appointed Chairman of the program in Scovill. He may be contacted at Ext. 409 for further information or pledge forms. Pledge forms are also available in the Main Plant Hospital.



Obituaries

JOHN BRODERICK died on February 1, 1966. Retired, Foundry, in July, 1964—28 years' service.

SEBASTIAN MOLLIKA died on February 1, 1966. An operator-adjuster in Cosmetic Assembly—12 years.

JULIUS SLAUSTAS died on February 9, 1966. Retired, Casting Shop, in July, 1961—19 years.

JOSEPH RUBBO died on February 16, 1966. Retired, Steam Dept., in April, 1962—25 years' service.

WACLAW OSOWSKI died on February 18, 1966. Retired, Blanking Room, in January, 1957—32 years.

VINCENT ADOMAITIS died on February 19, 1966. Retired, Wire Mill, in January, 1962—34 years.

NUNZIO MURNO died on February 19, 1966. Retired, Tin Shop, in November, 1953—30 years.

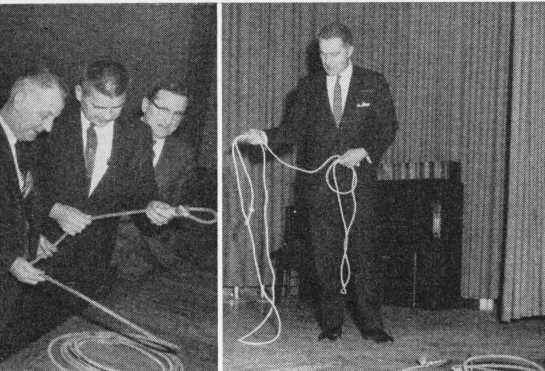
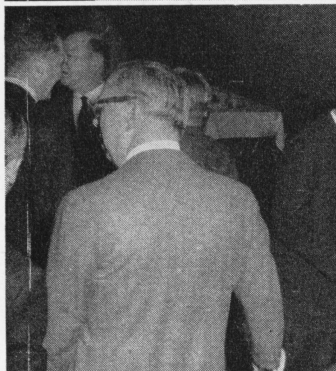
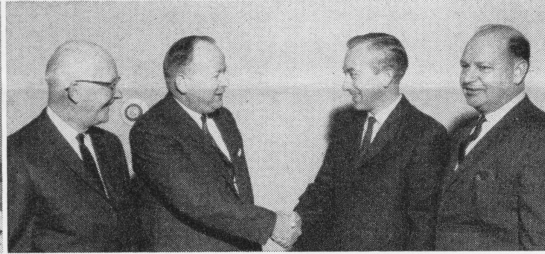
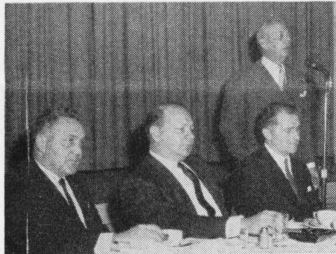


CLOSURE'S MID-WESTERN DISTRICT SERVICE ENGINEERS

The latest in products and equipment, and methods of better serving our customers, were tops on the agenda of the one-day seminar held in St. Louis, Missouri, recently for service representatives of the Mid-west territory.

Pictured above, seated:—Leo Deshaies, Waterbury; Ray Cox, Newark; Joseph Donahue, Dallas; and P. B. Jenson, Manager of Research & Development — Machines, of Waterbury.

Standing:—Ralph Swift, Los Angeles; Harold Hoskins, St. Louis; Reed Bertollette, Division Marketing Manager, of Waterbury; James Hurley, Cincinnati; William Holyfield and Mel Tucker of Jackson; Harold Belanger, Waterbury; Harry Porter, St. Louis; Donald Smith, Chicago.



FOREMEN HOLD ANNUAL BANQUET AT SERA

Top left:—Master of Ceremonies Chester Burnett welcomes members to the SFA's annual banquet. Seated at head table are Program Chairman John Baker, Vice President Fred Kirschbaum, and Scovill President Malcolm Baldrige.

Right:—Retiring president James Smith (second left) congratulates newly-elected president John Humiston with W. H. Shewbridge, secretary-treasurer, and vice president Kirschbaum interested onlookers.

As guest speaker, Mr. Baldrige reviewed the Company's activities of the past year and foresaw another good year coming up. An additional most interesting treat was the showing of an exciting color film taken by Mr. Baldrige at the World Championship Steer Roping Contest held in San Antonio, Texas; as well as his demonstration of various roping and lassoing feats.

John Humiston Heads SFA For 1966 Term

President—John Humiston

Vice Pres.—Fred Kirschbaum

Secy-Treas.—W. H. Shewbridge

Asst. Treas.—Lawrence Bray

Trustees—

Div. 1—Manufacturing, East & Foundry—Frank Martin

Div. 2—Closure & Gen. Mfg. Tool West—Alec Kalachuk

Div. 3—Mills—North, Strip, Wire, N. Milford—William Rosevear

Div. 4—Mills—Rod, Aluminum, Casting—Charles Summa

Div. 5—Office—Administration & Staff—Lawrence Bray

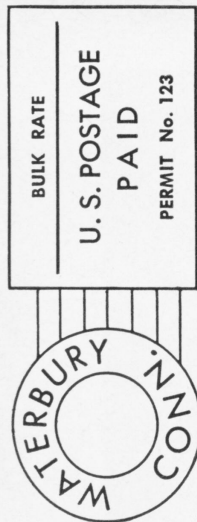
Div. 6—Maintenance—Harold Stieler

Div. 7—General Manufacturing (West)—Fred Kirschbaum

Program Committee — Chairman John Banker, John Mitchell, Raymond Caffrey, Honorary Chairman, Anthony Laudate

Membership Committee — Anthony Sebastian, John Meehan, W. H. Shewbridge

Sick Committee — John Mitchell, Edward Willhaus



Classified Advertising

For Sale

1956 Nash, 1957 Chevrolet, 1955 Buick—best offer buys. 755-1351 between 8 and 10 a.m. or after 6 p.m.

1955 Pontiac Catalina, excellent condition, one owner, \$150. 756-4321 or 755-6909 between 5 and 6 p.m.

Glenwood combination gas/oil stove, slightly used; 3-way floor lamp with pearl bottom. 753-6880, from 9 a.m. to 12 noon, or all day Saturday/Sunday.

1960 Riding tractor, 5½ h.p. wheel horse 4-ft. snow plow; 32" grass cutter, chains for tires, \$250. 879-9184 after 4 p.m.

1964 Falcon burgundy Sprint; 4 on the floor, bucket seats; must sell, service obligation, \$1375. 755-0004 after 4 p.m.

1960 Chevy red convertible, standard, V-8. 753-6186 weekdays after 3:30 p.m. or all day Saturday/Sunday.

Four 8.00 x 14 US Royal Master tubeless whitewall tires on wheels. 755-8080 after 6 p.m.

Transistorized portable tape recorder, 8" x 4" x 3" 76mm reel, 2 motors; loud, built-in speaker, microphone, earphone, reel guard and carrying handle, \$5; Twin and single windows, 30" x 30" glass aluminum windows/screen, in and out casing included, \$30; bathroom sink with chrome; faucet, legs and towel rack, \$15; porcelain double-bowl kitchen sink, will fit in cabinet, \$10. 879-1204.

Full-sized Melodiana accordion plays clar. & mast.; with adjustable shoulder straps, handsome carrying case, book stand/tripod, \$75; 5-month old tan dashchund, pure-breed, all necessary shots and certificates allowed in New York state and Conn., \$100; 3-week old turquoise kitchen set, imitation marble top, 4 chairs; cost, \$90, asking \$70. 879-1204.

1932 Dodge 4-door sedan, good condition; 2 new tires, new brakes; needs coil

Girls' Club News

By Vi Pelletier & Mary Schiffliti

Our annual card party and hat show is scheduled for March 21 at SERA. Here's your opportunity to see the latest styles for this year's Easter Parade. Flyers should be out very soon.

Our bus trip to New York was such a success that another is being planned for Saturday, March 26th. From reports on the return trip on Feb. 19th, more than half are planning to make this trip also—so, get your reservations in as soon as possible.

Another year is coming to an end for the Girls' Club. The annual meeting and election of a council will be held on April 18th. The Nominating Committee is now available for names of interested Club members to serve on the council. They are: Chairman *Ellen Donovan*, *Nora Williams*, *Violet Pelletier*, *Della Riccio* and *Cloe Read*. Don't be bashful, girls, if interested, let one of them know—they can't reach every Club member and so would appreciate your contacting them if you, or someone you know, are interested in serving.

and battery; will consider offers above \$400. New Milford 354-2428.

Matching mahogany tables with brown leather tops; 2 lamp tables, 22" square, 24" high, \$9 each; coffee table, 32" square x 16" high, \$12. 272-6390 evenings.

Car radio, good condition; electric motor and pump for Speed Queen washing machine, never used; wood bench saw, cuts 2 x 4, no motor. 755-5908 after 5 p.m.

5 tubeless tires, 7.50 x 14 Firestone Deluxe Champion, white walls, original tread. 753-0369 after 6 p.m. or weekends.

Maple bed, single size, complete. 756-0691 after 5 p.m.

1964 Ford 8-cylinder, automatic; burgundy outside, black interior; excellent condition. 753-0274 after 3 p.m.

1953 Plymouth, good running condition; Norge 4 burner gas stove, good oven. 754-1337 after 4 p.m.

Wanted To Buy

Child's crib. 272-3020 after 5 p.m.

2 or 3-family house in Waterbury area with heat, hot water, preferably with garage; must be in good condition. 754-8372 after 3 p.m.

14" rims for 1961 Ford Galaxie. 754-1337 after 4 p.m.

Evening gown, size 16, in good condition. 755-3329 after 6 p.m.

Rent Wanted

Garage in vicinity of Willow St. to keep stock car. 753-0274 after 3 p.m.

Tenants Wanted

3-room basement apartment; centrally located, hot water heat, tile shower and bath, redecorated, reasonable. 755-5963 after 4 p.m.

4 clean rooms, 2nd floor, water heater, storm doors and windows, bus at door, adults only. 755-5650.

3 modern unfurnished rooms; electricity, heat, built-in range, etc. Call at 76 Rosemount Ave.

5½ rooms at 1027 South Main St., 3rd floor. Hardwood floors, all improvements; near schools and all facilities. 753-7024.

Other

Elementary piano students now being accepted, \$1 per lesson. 756-8642.

Precision saw filing, all work guaranteed. 755-1510.

FOUND—silver Alpine Guide medal. Ext. 345.

Medicare — Part B

Thursday, March 31, 1966 is the deadline for signing up for Part B of the Medicare program.

All persons 65 years of age and over are urged to sign up before the deadline date so that benefits will be available July 1st.

Published by
SCOVILL MANUFACTURING COMPANY

99 Mill Street, Waterbury, Conn.

Return Requested

SCOVILL BULLETIN

EDITOR

Margaret E. Fenske

PHOTOGRAPHER

Adam Wolak

Published the first week of each month in the interest of Scovill men and women. The deadline for classified advertising and news items is the 20th of the month preceding issue.

Our address: Scovill Bulletin, P.O. Box 1820, Waterbury, Conn.

**REPEAT CUSTOMERS
MEAN JOB SECURITY!**



**QUALITY CONTROL
MEANS
REPEAT CUSTOMERS!**